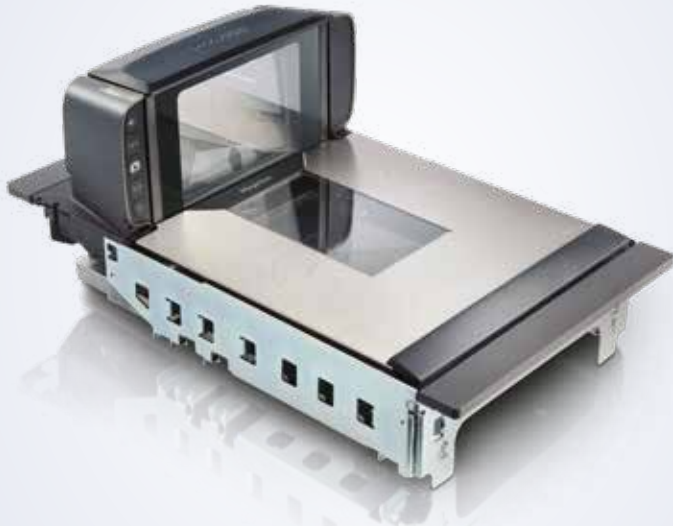


# MAGELLAN™ 9300i/9400i



## THE POWER OF IMAGING

The Magellan™ 9300i/9400i scanner/scale: a new class of high performance bar code scanners. With digital imagers in all planes, the 9300i/9400i scanner reads both 1D and 2D bar codes seamlessly without requiring item orientation by the cashier.

With a more traditional bonnet height and large horizontal and vertical windows, the Magellan 9300i/9400i allows optimum positioning for POS or self-checkout touchscreens, payment terminals and printers while maintaining ergonomic comfort for both seated and standing cashiers.

## ENHANCING THE CUSTOMER EXPERIENCE

The optional Magellan Customer Service Scanner (CSS) enables retailers to easily engage their customers in mobile commerce programs, allowing them to scan bar codes from their mobile phone screen or paper coupons while the cashier continues to scan regular items in parallel, resulting in a significant reduction in total transaction time.

## LOSS PREVENTION

Innovative features and options such as ScaleSentry™ shrink monitoring/prevention technology, AllWeighs™ platters and the support of all major EAS systems make 9300i/9400i purpose-built to help retailers reduce shrink at the POS.

## ENTERPRISE FEATURES

Remote Management is supported for OPOS, JavaPOS, IBM Systems Director® and Wavelink® Avalanche®. Additional capabilities are available with the Value Added Features included in every Magellan scanner.

## FEATURES

- Full digital scanning with 2D code reading in every plane and image capture capabilities makes the 9300i/9400i scanner and scanner scales highly reliable, drop-in replacements for most bioptic laser scanners with advanced imaging and decoding capabilities of Magellan 9800i models and Jade™ systems
- Available with a dedicated Magellan Customer Service Scanner (CSS) with flexible mounting for reading cell phones, coupons and loyalty cards
- Magellan 9300i/9400i bi-optic form factor is compatible with traditional checkstands and scanning techniques, providing an attractively priced alternative to the Magellan 9800i scanner/scale
- Available with factory installed scales in pre-verified and on-site certifiable versions and models for integration with local scale manufacturer solutions
- EASEOFCARE Service Plans offer a wide range of service options to protect your investment, ensuring maximum productivity and ROI
- Optional Digimarc® Barcode Reading (9400i series only)

## INDUSTRY - APPLICATION

### All-Weighs Scale Platter

- The All-Weighs scale platter design provides an alternative weighing surface on top of the bonnet, allowing the user to lay produce that is too long to fit on the platter.

### ScaleSentry Technology

- Monitors the 2 primary sides of the scale platter with an infrared (invisible) beam to detect if fruit or produce is misplaced on the scale platter causing the item to be under-weighed.
- Misplaced fruits or produce will break the infrared beam and trigger an alert to the cashier, preventing the weight from being transmitted to the POS until the cashier corrects the problem.



# TECHNICAL SPECIFICATIONS

## DECODING CAPABILITY

<b>1D / Linear Codes</b>	Autodiscriminates all standard 1D codes including GS1 DataBar™ linear codes.
<b>Stacked Codes</b>	EAN/JAN Composites; GS1 DataBar Composites; GS1 DataBar Expanded Stacked; GS1 DataBar Stacked; GS1 DataBar Stacked Omnidirectional; MicroPDF417; PDF417; UPC A/E Composites
<b>2D Codes</b>	Aztec Code; Data Matrix; QR Code, Micro QR Code
<b>Digital Watermarks</b>	Optional support for Digimarc® Barcode (9400i series only)

## ELECTRICAL

<b>AC Power Requirements</b>	AC Input: 100 - 240 VAC, 50-60 Hz Power Consumption: Operating (Nominal): 12 Watts Sleep Mode: 11 Watts
------------------------------	---

## ENVIRONMENTAL

<b>Ambient Light</b>	0-86,080 lux
<b>ESD Protection (Air Discharge)</b>	25 kV
<b>Humidity (Non-Condensing)</b>	5 - 95%
<b>Temperature</b>	Operating: 10 to 40 °C / 50 to 104 °F Storage/Transport: -40 to 70 °C / -40 to 158 °F

## INTERFACES

<b>Auxiliary Ports</b>	Powered RS-232; Remote Scale Display; EAS Controller Ports; Sensormatic, Interlock; Powered USB Host (Type A) (x2)
<b>Multi-Interface</b>	RS-232 / IBM 46XX / USB Multi-Interface; OEM (IBM) USB Plus Power (Scanner and Scale); RS-232 (Scanner) / RS-232 (Scale); RS-232 (Scanner) or Single Cable RS-232 (Scanner and Scale)
<b>Remote Management Capabilities</b>	Diagnostic Reporting; WMI (OPOS and JavaPOS) and MBeans (JavaPOS) compliant Host Download; Supports IBM Systems Director®, Wavelink® Avalanche® and other ERP management solutions

## LOSS PREVENTION

<b>All-Weighs Scale Platter</b>	Integrated horizontal and vertical scale platter surfaces increase active weighing area for easy, accurate weighing of large items.
<b>ScaleSentry Shrink Monitoring / Prevention System</b>	Configurable audio / visual indicators identify items placed outside weighing surface
<b>EAS Features</b>	Sensormatic: Datalogic SmartSentry™ Firmware technology interfaces with the Sensormatic AMB-9010/IPS and ScanMax® Pro EAS Deactivation Controllers with AMB-5194 antenna; Good Read / EAS Status Indicators

## OPTIONAL FEATURES

<b>Magellan Scale Technology</b>	Checkpoint Systems: Integrated EAS hardware will work with Counterpoint IX and Evolve D11 models; Sensormatic: Good Read Acknowledgement
<b>Dual Interval Scale</b>	Minimum Increment: Range 1: 0.002 kg / 0.005 lb; Range 2: 0.005 kg / 0.010 lb Scale Capacity: Range 1: 0 - 6.0 kg / 0 - 15.0 lb; Range 2: 6.0 - 15.0 kg / 15.0 - 30.0 lb
<b>Single Interval Scale</b>	Minimum Increment: 0.005 kg / 0.010 lb; Scale Capacity: 0 - 15.0 kg / 0 - 30.0 lb

## PHYSICAL CHARACTERISTICS

<b>Dimensions</b>	Depth (Below Counter): 10.2 cm / 4.0 in Height (Above Counter): 13.0 cm / 5.1 in Length (By Model): 939401 (Short, Scanner Only): 35.6 cm / 14.0 in 939403 (Medium, Scanner Only): 40.1 cm / 15.8 in 939405 (Long, Scanner Only): 50.8 cm / 20.0 in 939404 (Medium, Scanner/Scale): 40.1 cm / 15.8 in 939406 (Long, Scanner/Scale): 50.8 cm / 20.0 in Width: 29.2 cm / 11.5 in
<b>Indicators</b>	Volume; Supports WAV file formats Visual: Good Read confirmation for all reading planes; Scale center of zero; ScaleSentry event; Sensormatic EAS status

## READING PERFORMANCE

<b>Image Capture</b>	Horizontal and Vertical Window: Graphic Formats: BMP, JPEG; Greyscale: 256, 16, 2
<b>Illumination</b>	Multiple Diffused LEDs: Orientation and wavelength optimized for eye comfort
<b>Reading Coverage</b>	Seamless reading of linear and 2D codes in all planes (5 sides plus Customer Service Scanner)

## SAFETY & REGULATORY

<b>Agency Approvals</b>	The product meets necessary safety and regulatory approvals for its intended use. The Quick Reference Guide for this product can be referred to for a complete list of certifications.
<b>Environmental Compliance</b>	Complies to China RoHS; Complies to EU RoHS; Complies to R.E.A.C.H. - EC1907/2006

## UTILITIES

<b>Scanner™ Utility</b>	Scannerizer™ On-Screen Programming (OSP) configuration software is available for download at no charge.
<b>OPOS / JavaPOS</b>	OPOS and JavaPOS utilities are available for download at no charge.

## WARRANTY

<b>Warranty</b>	1-Year Factory Warranty
-----------------	-------------------------

# ACCESSORIES



90ACC0102 Remote Scale Display, Single Head - English  
90ACC0104 Remote Scale Display, Single Head - Metric



90ACC0103 Remote Scale Display, Dual Head - English  
90ACC0105 Remote Scale Display, Dual Head - Metric



90ACC0169 Customer Service Scanner (CSS)



90ACC0170 CSS with Omni Mount



90ACC0174 CSS with Bonnet Side Mount



90ACC0175 CSS with Bonnet Back Mount